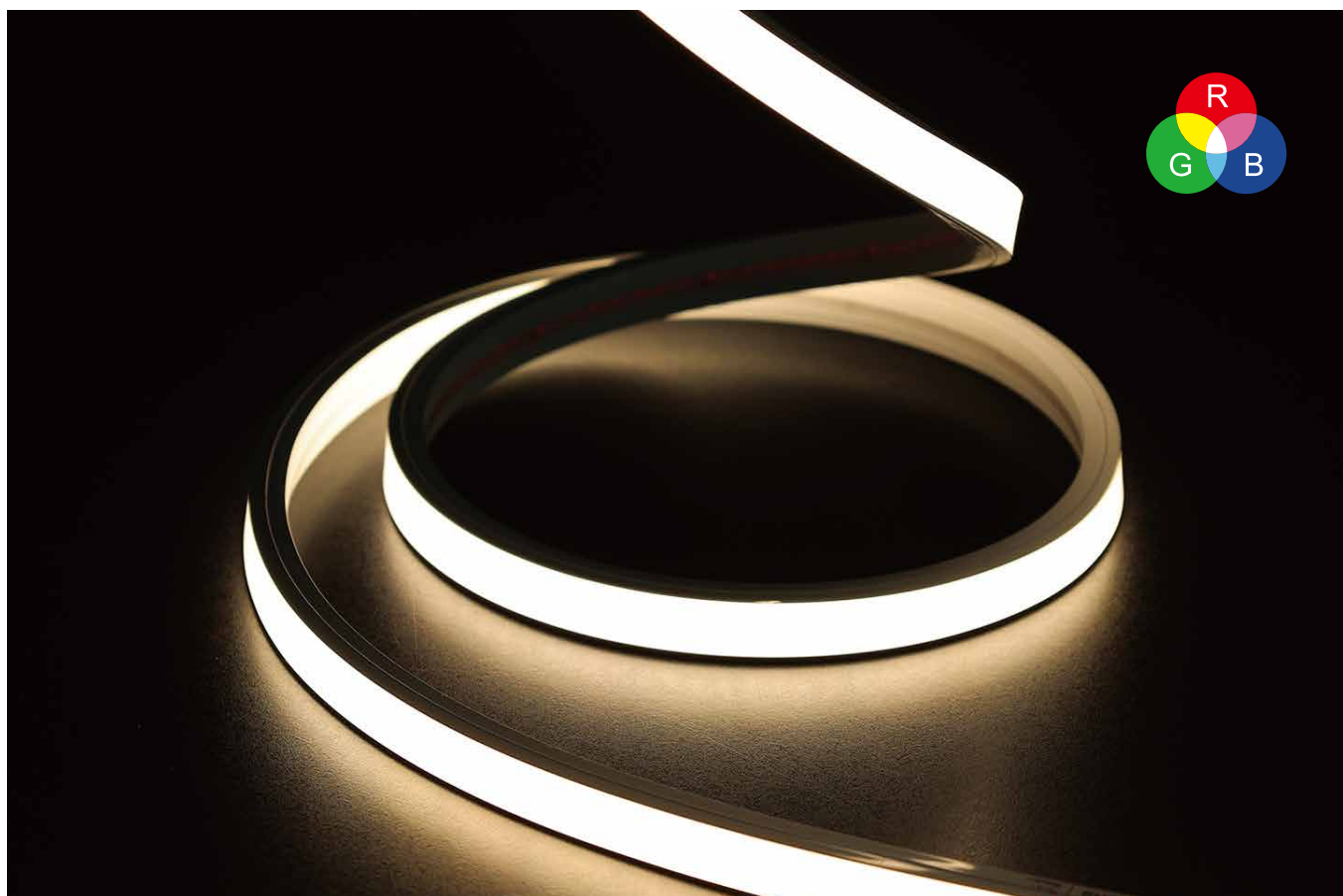


ULTRA-THIN LED FLEX NEON

Model: SQ256JC3-N1006



Features

- 1) Ultra–thin neon flex, Suitable for narrow space illumination.
- 2) Pretty easy to hide the light engine. Smooth and gentle light output.
- 3) 30% energy saving compare to competitors.
- 4) IP65 protection level, acid, alkali, salt corrosion resistance, UV resistance.
- 5) 3 years warranty.

Application

Window display lighting, home decorative lighting, background lighting, the places that need linear lighting effect etc.

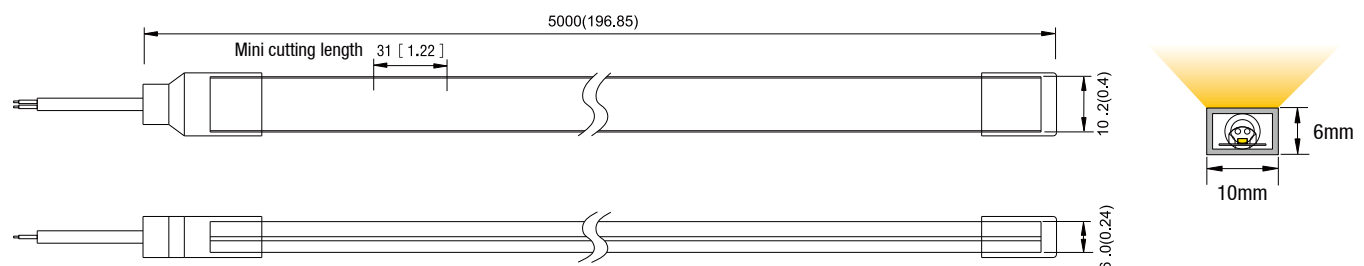
Parameters

Part Number	SQ256JC3–N1006	CRI	>90	CCT(K)/Color	● 3000 ● 4000 ● 5000 ○ 6500	Wavelength (nm)	/	SDCM	≤5	Luminous Flux (LM/M)	800	Efficacy (LM/W)	80
Dimensions	5000*10*6mm												
LED Qty/m	256LEDs/m												
Voltage	DC24V												
Input Current (A)	0.42A (1m)												
Power	10W/M				● Red	620–625	/			120		12	
Power Range	9~11W				● Green	520–530	/			350		35	
Times of Power On and Off	>10000 Times				● Blue	460–470	/			100		10	
IP Grade	IP65				● Yellow	587–590	/			500		50	
					● Pink	665–675	/			200		20	

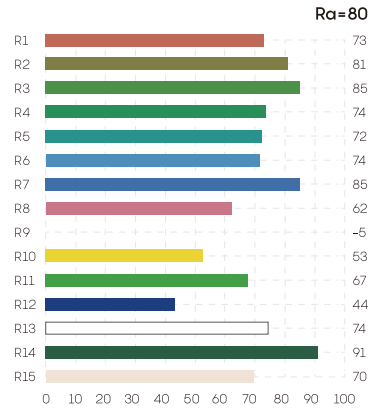
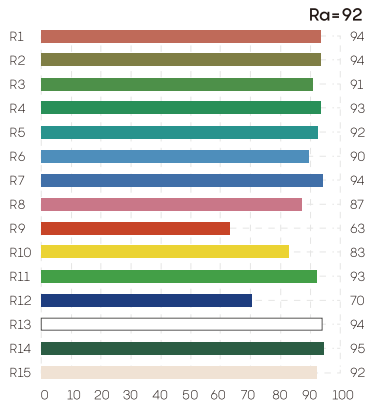
Remarks:

- 1) The given data are typical values due to the tolerance of the production and electrical components, output value and electrical power can vary up to 10%.
- 2) Testing standards refer to IES LM–79–08.
- 3) The above luminous flux is based on CRI80, and the number will reduce by around 20% in CRI 90.
PANTONE color numbers corresponding to colored silicone: R:186C, G:356C, B:2718C, Y:103C, P:224C.

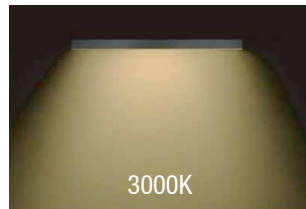
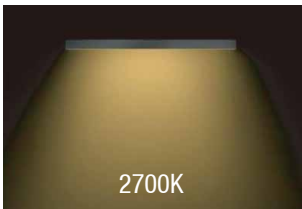
Dimension



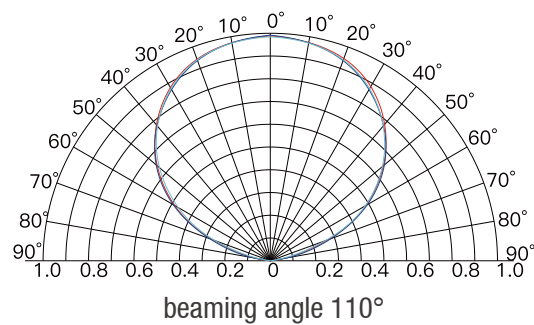
Rendering Index Comparison



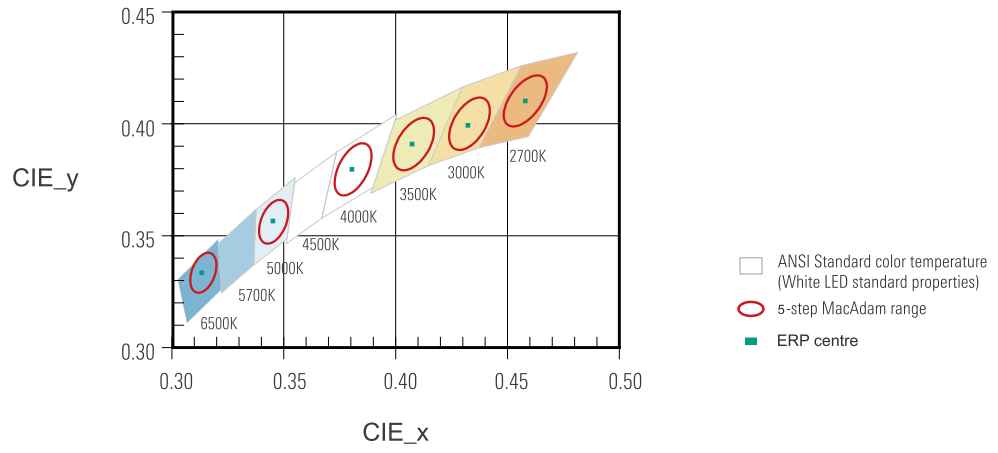
Provide Full CCT Range From 2700K to 6500K



Beaming Angle

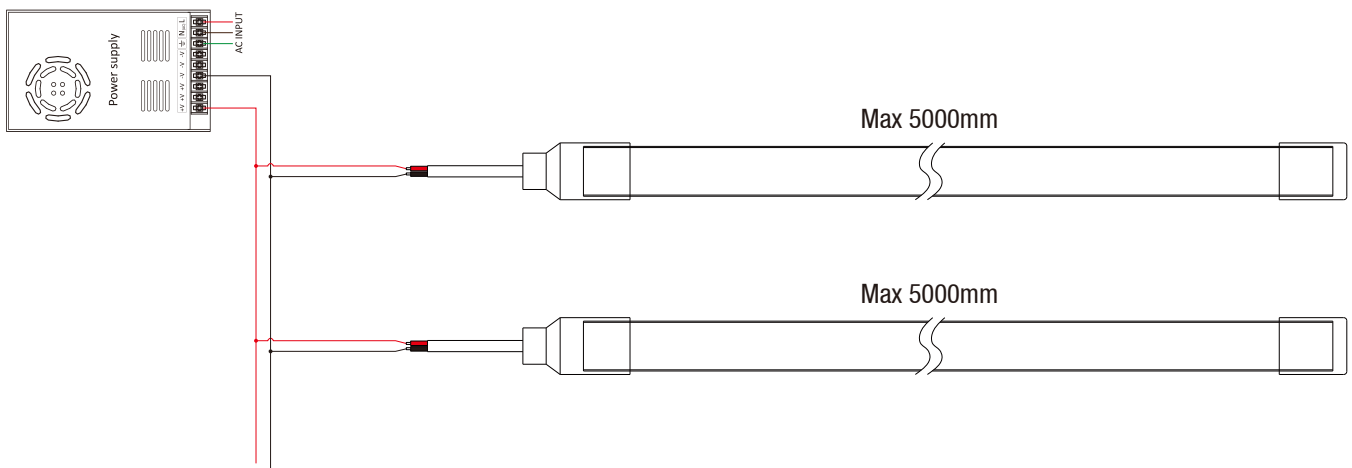


Coordinates and Tolerances Conform to CIE 1931

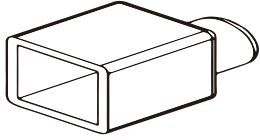


	2700K	3000K	3500K	4000K	5000K	6500K
x0	0.463	0.433	0.408	0.380	0.346	0.313
y0	0.420	0.403	0.393	0.380	0.359	0.337

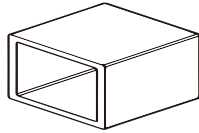
Wire Connection



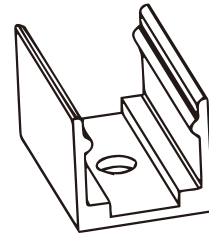
Mounting Accessories



Straight out line Plug
Model Number: 4120819-011

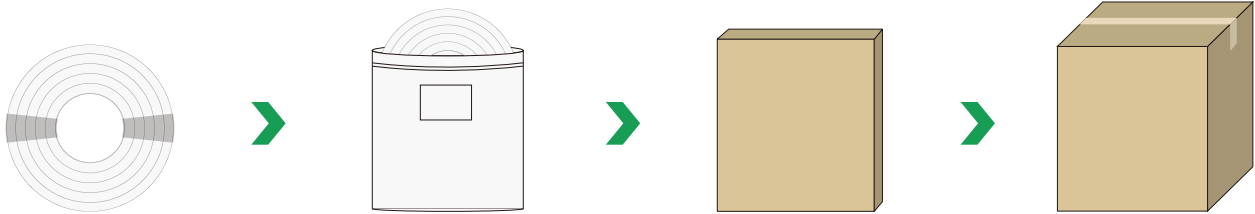


Tail Plug
Model Number: 4120819-012



Fixed Buckle
Model Number: 41201460-003

Packing information



5 meters per roll

One roll per antistatic bag

2 Bag per inner box

20 Box per carton

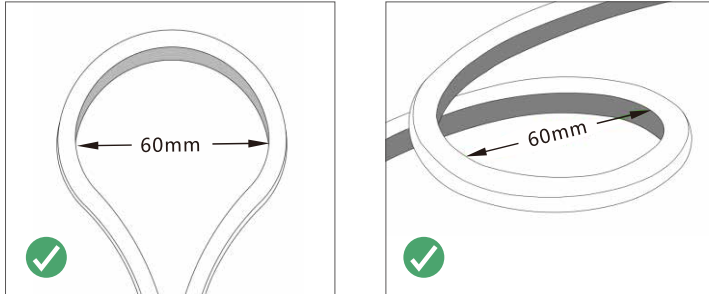
Part Number	Outer Box Dimension (mm)	Inner Box Dimension (mm)	Quantity Per Carton (m)	Net Weight (kg)	Gross Weight (kg)
SQ256JC3-N1006	L555*W285*H290	L270*W270*H25	200	15	17.2

Given the packing manner difference, the actual packing information is subject to that for the real products.

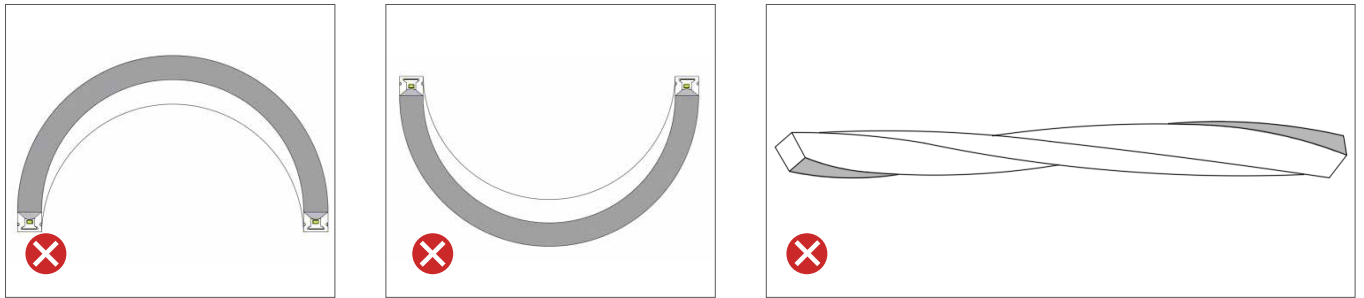
Bending Direction

Please note when installing the strip, not all directions can be bent, bending shape, bending diameter size and direction, please follow the legend below to avoid damage to the LED strip.

Correct Way to Bend

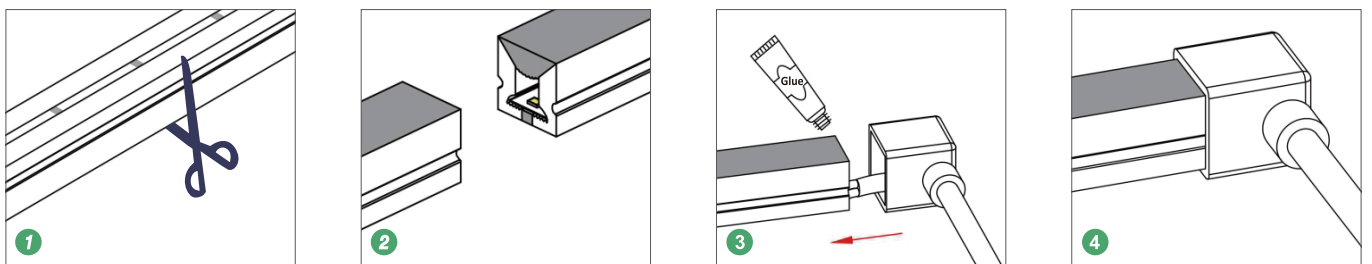


Wrong Way to Bend

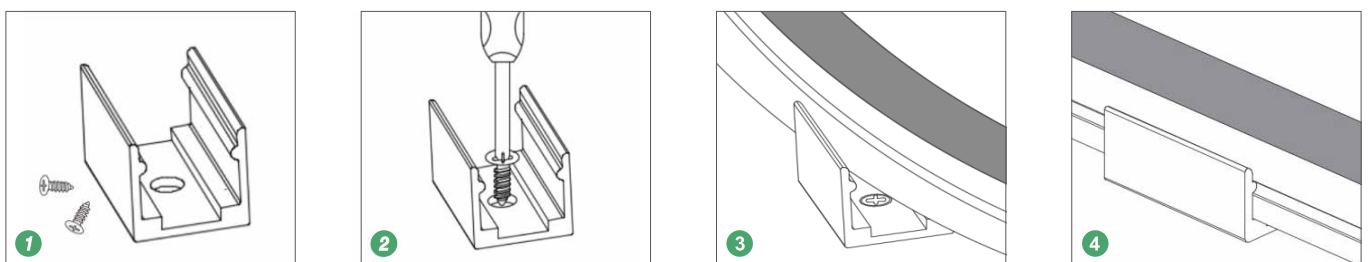


Installation Method

Shear Mounting



Accessories installation



Instructions

- 01) Disassembling or modifying the product is not allowed.
- 02) Installation with power on is not allowed.
- 03) Any organic solvent chemical is not allowed.
- 04) Isolation and corrosion prevention on all wiring points and wire ends.
- 05) Make sure the power wire is big enough and ensure the voltage and connection are all correct before power on.
- 06) Installation, maintenance should be done by professional staff.
- 07) The power wire between power supply and LED strips should be less than two meters to keep the same brightness on all parts.
- 08) Do not power on during installation or assembly of the light strip, to avoid short-circuiting and burning out of the light strip due to misoperation during the operation
- 09) The lamp beads can only be powered on when they are connected, installed and correct.
- 10) When installing, try to avoid excessive bending and twisting of the light strip, so as not to damage the conductive components and cause defects.
- 11) The LED flexible light strip can only be cut at the place where the cut mark is printed on the light strip. Cutting at other places will damage the circuit circuit of the light strip and cause some lamp beads to not light up.
- 12) The minimum bending diameter of this product: >60mm.

Declaration

- 01) To ensure the safety, the broken wires need to be replaced by the manufacturer or the service agent, or by the qualified staff.
- 02) The given data in the specification is the laboratory data, there may be discrepancy found in the actual products.
- 03) The given drawings in the specification are only for reference, there may be discrepancy found in the actual products.
- 04) The products are subject to change without prior notification.



Official Website



WeChat Public

SHENZHEN LEADBEYOND LINEAR LIGHTING CO., LTD.

Tel: +86-755-83056231 info@leadbeyondled.com www.leadbeyondled.net www.leadbeyondled.com

Company Address.: 28F, Luban Building, Hongli West Road, Futian District, Shenzhen 518034, China

Factory Address: 3F, 4F and 6F, Buiding A&B Xinyongfeng Industrial Area, Yingrenshi Village, Shiyan Town, Bao'an District, Shenzhen 518108, China