

# AC220V LED STRIPS

Model: SE120JGJ-10



LM-80

IP67

## Features

- 1) Powered by high output 2835 LED.
- 2) AC Input, could be directly connected to the power grid.
- 3) Built-in constant temperature and constant current protection for improved safety and better performance.
- 4) Aluminum Profile Installation could be used for better heat dissipation and reduced light decay, and thus extend the life span of the strip.

## Application

Applicable for all kinds of indoor and outdoor lighting like corner decoration or contour lighting in buildings, shopping malls, cabinets, etc.

## Parameters

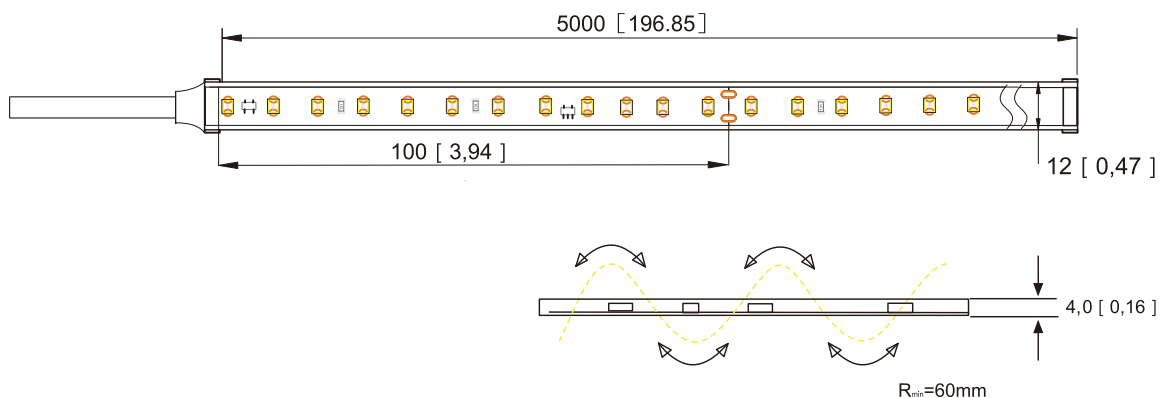
Part Number	SE120JGJ-10	CRI	Color	CCT(K)	Luminous Flux (LM/M)	Efficacy (LM/W)
Dimensions	5000*12mm		WW	● 2700	750	75
LED Type	2835 LED		WW	● 3000	800	80
LED Qty/m	120LEDs/m	80+	NW	● 4000	850	85
Voltage	AC220V		MW	● 5000	850	85
Input Current (A)	0.046A (1m)		W	● 6500	850	85
Power	10W/M					
Power Range	9~11W					
Times of Power On and Off	>10000 Times					
IP Grade	IP67					

### Remarks:

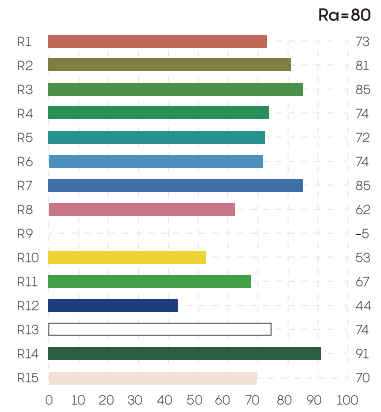
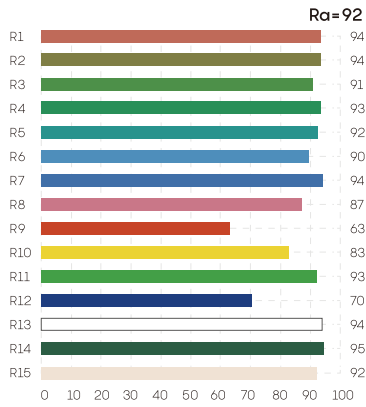
- 1) The given data are typical values due to the tolerance of the production and electrical components, output value and electrical power can vary up to 10%.
- 2) Testing standards refer to IES LM-79-08.
- 3) The above luminous flux is based on CRI80, and the number will reduce by around 20% in CRI 90.

## Dimension

Unit: mm/inch



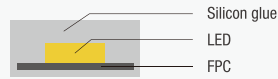
## Rendering Index Comparison



## Provides Different IP Graded Strips

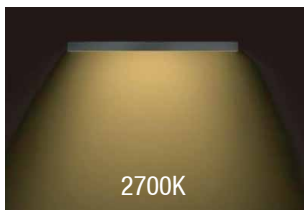
IP67

silicone solid extrusion

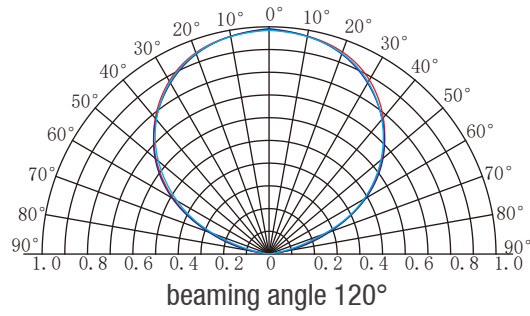


(in rain)

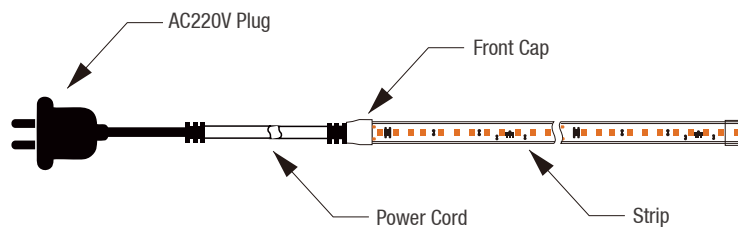
## Provide Full CCT Range From 2700K to 6500K



## Beaming Angle



## Wire Connection



### Remarks:

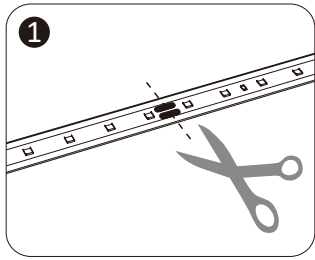
- 1) The strips is field cuttable at every 100mm. Please cut only at the cutting line in the strip.
- 2) The strips should be lit for less than 1 minute when it is rolled.
- 3) The strip is strictly prohibited to be immersed in water.

### Standard Accessories

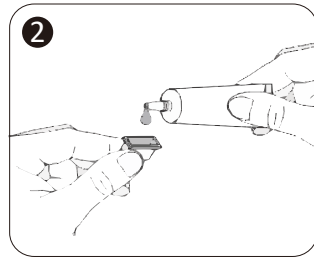
Part No.	Name	Specifications	Picture
4120819-003	Silicone Mounting Clip	12mm width	
4230890-001	Front Cap	/	
4120819-004	End Cap	/	
3022815-006	wire	European standard	

## Installation Guidance After Cutting Strips

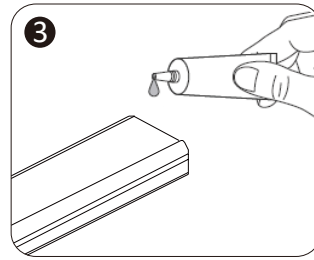
**!** The strip should be disconnected with AC220V during installation.



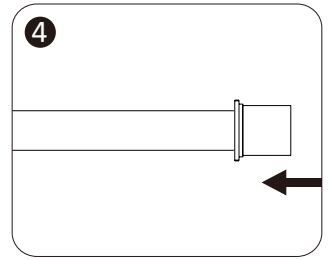
1. Cut the strip in the cutting line.



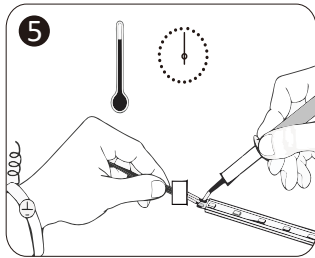
2. Apply glue to the end cap.



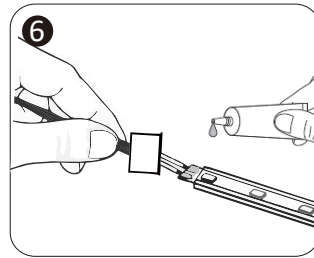
3. Apply glue around the strip.



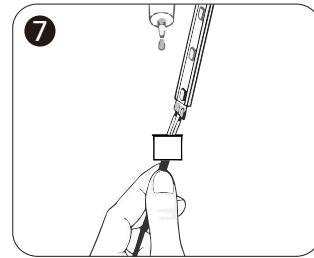
4. Attach the end cap to the strip.



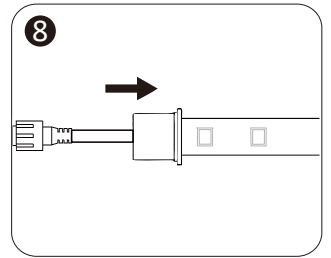
5. Weld the wire to the strip.



6. Insert the front cap into the wire and apply glue to the cap.



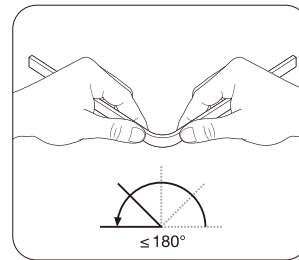
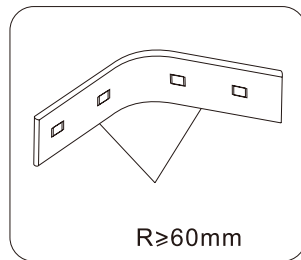
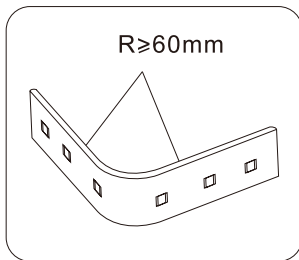
7. Apply glue around the strip.



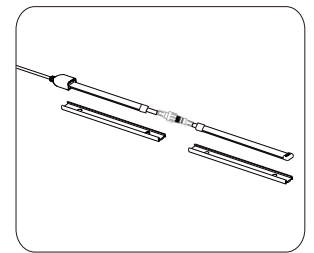
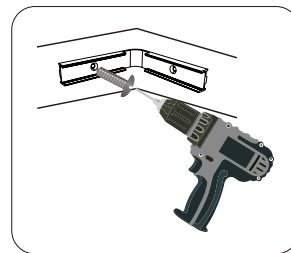
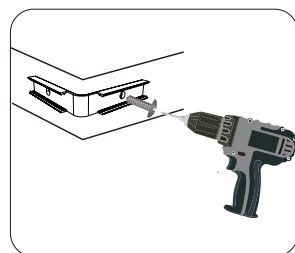
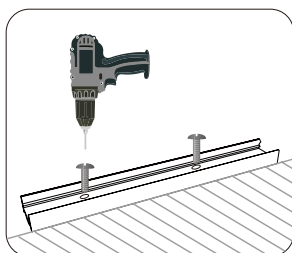
8. Attached the front cap to the strip.

### Cautions:

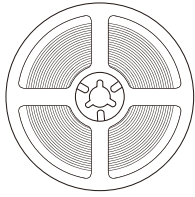
- 1) Pay attention to the position of the led and the bending degree during installation.
- 2) The minimum bending diameter for this strip is 60mm.



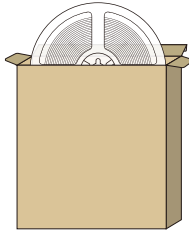
## Installation of Aluminum Profile



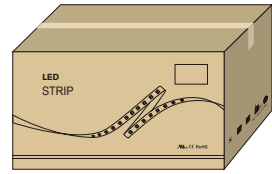
## Packing Information



20 meters per roll



One roll per inner box



200m per carton

Part Number	Carton Dimension (mm)	Length Per Roll (pcs)	Quantity Per Carton (m)	Net Weight (kg)	Gross Weight (kg)
SE120JGJ-10	510*250*260	20	200	12	13.7

Given the packing manner difference, the actual packing information is subject to that for the real products.

## Instructions

- 1) Disassembling or modifying the product is not allowed.
- 2) Installation with power on is not allowed.
- 3) Any organic solvent chemical is not allowed.
- 4) Isolation and corrosion prevention on all wiring points and wire ends.
- 5) Make sure the power wire is big enough and ensure the voltage and connection are all correct before power on.
- 6) Installation, maintenance should be done by professional staff.
- 7) The power wire between power supply and LED strips should be less than two meters to keep the same brightness on all parts.

## Declaration

- 1) To ensure the safety, the broken wires need to be replaced by the manufacturer or the service agent, or by the qualified staff.
- 2) The given data in the specification is the laboratory data, there may be discrepancy found in the actual products.
- 3) The given drawings in the specification are only for reference, there may be discrepancy found in the actual products.
- 4) The products are subject to change without prior notification.



Official Website



WeChat Public

## SHENZHEN LEADBEYOND LINEAR LIGHTING CO., LTD.

Tel: +86-755-83056231 info@leadbeyondled.com www.leadbeyondled.net www.leadbeyondled.com

Company Address.: 28F, Luban Building, Hongli West Road, Futian District, Shenzhen 518034, China

Factory Address: 3F, 4F and 6F, Buiding A&B Xinyongfeng Industrial Area, Yingrenshi Village, Shiyan Town, Bao'an District, Shenzhen 518108, China